



## 58 E WAYFINDER LANE

Hampstead, NC 28443

**\$1,249,000**

HOME PLAN: Spinnaker

HOMESITE: 1 at Delamar

**2,891 SQFT | 3 BED | 2.5 BATH | 2 STORY | 2 GARAGE**

- Front Covered Porch
- Rear Covered Porch
- Rear Screened Porch
- Rear Terrace
- Rear Patio
- Wet Bar in Great Room
- Second-Floor Flex Room
- First-Floor Study
- First-Floor Primary Suite

EXPLORE  
THIS HOME  
FURTHER



The Spinnaker blends timeless coastal architecture with modern comfort, featuring an open-concept design, inviting porches, and thoughtfully crafted spaces for relaxed everyday living.

Located within Delamar, residents enjoy exceptional waterfront amenities including a private boat launch, boat slips, boat storage, resort-style pool, fitness center, tennis and pickleball courts, and outdoor gathering spaces. Just minutes from area beaches, shopping, dining, and Wilmington, Delamar offers the perfect balance of coastal tranquility and modern convenience.

910.490.4339

Ali@Bluecrest-Homes.com

Bluecrest-Homes.com

For Concept Only. Floor plans, renderings, specifications, features, dimensions, and pricing are subject to change without notice. Square footages and dimensions are approximate. Artist renderings may show optional features, upgrades, or elements not included in the base home. Please see a New Home Consultant for details.

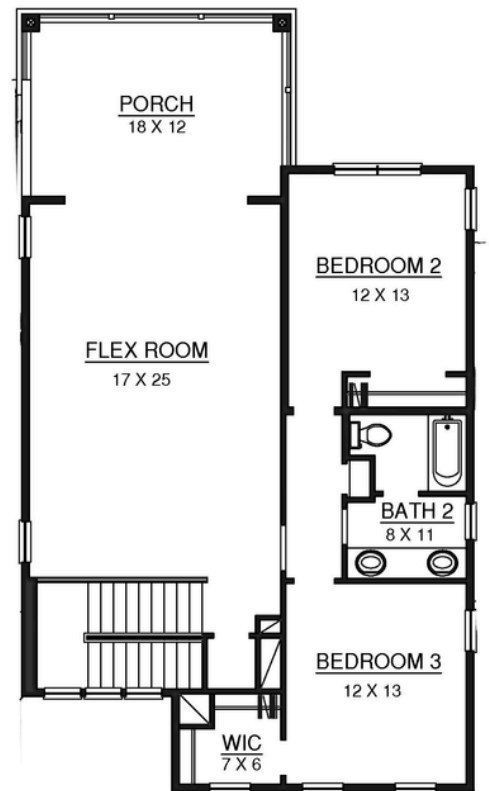




# FIRST FLOOR



# SECOND FLOOR



 [Bluecrest-Homes.com](http://Bluecrest-Homes.com)

 910.490.4339

 [Ali@Bluecrest-Homes.com](mailto:Ali@Bluecrest-Homes.com)



For Concept Only. Floor plans, renderings, specifications, features, dimensions, and pricing are subject to change without notice. Square footages and dimensions are approximate. Artist renderings may show optional features, upgrades, or elements not included in the base home. Please see a New Home Consultant for details.

